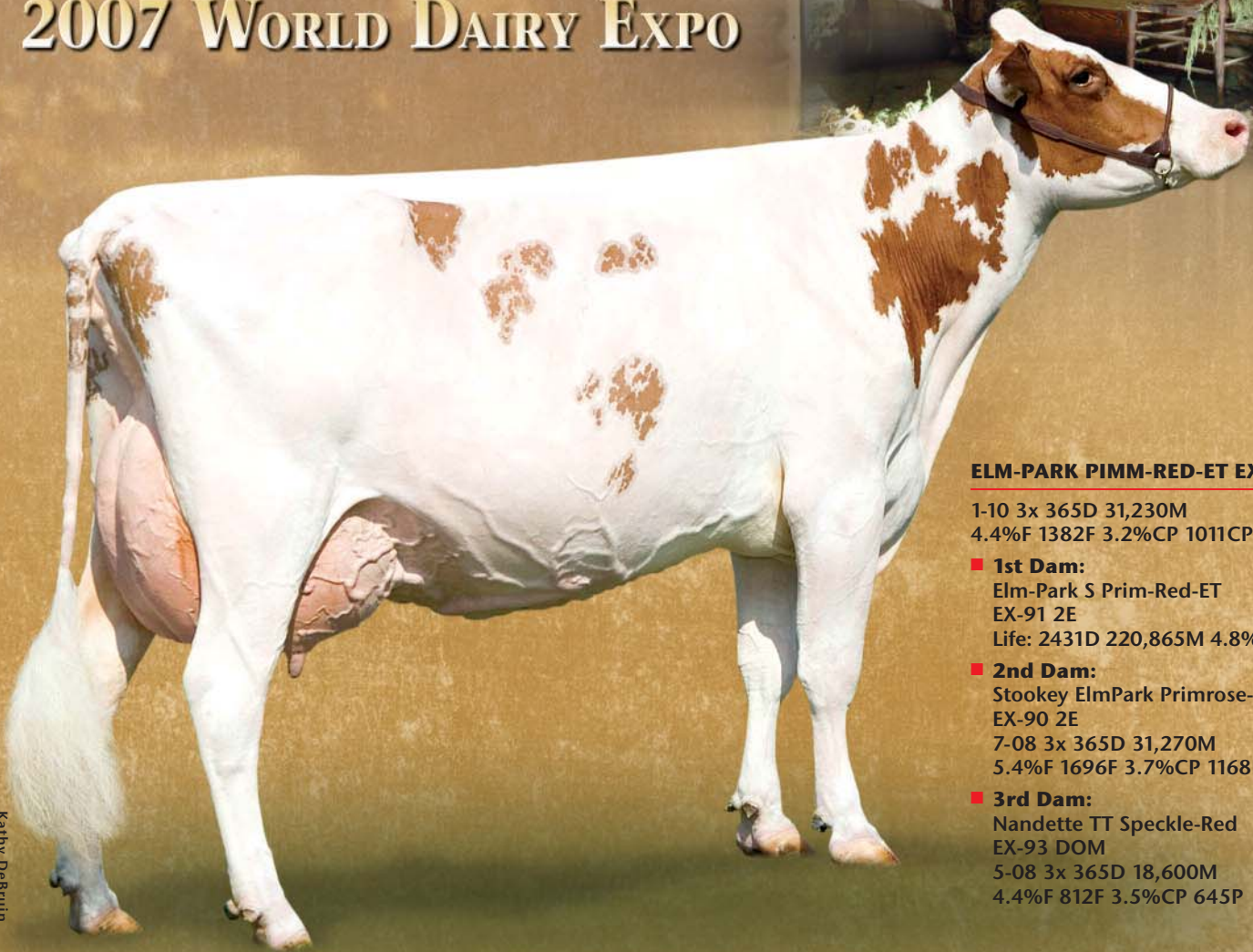
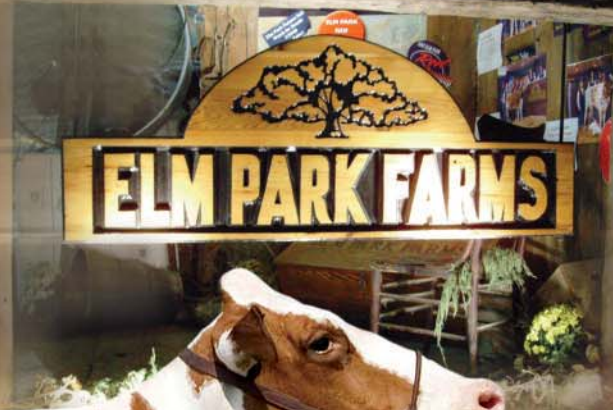


EXCELLENCE YEAR AFTER YEAR!

PREMIER BREEDER 2007 WORLD DAIRY EXPO



Kathy DeBruin

ELM-PARK PIMM-RED-ET EX-90

1-10 3x 365D 31,230M
4.4%F 1382F 3.2%CP 1011CP

■ 1st Dam:

Elm-Park S Prim-Red-ET
EX-91 2E

Life: 2431D 220,865M 4.8%F 3.7%P

■ 2nd Dam:

Stookey ElmPark Primrose-ET*RC
EX-90 2E

7-08 3x 365D 31,270M

5.4%F 1696F 3.7%CP 1168P

■ 3rd Dam:

Nandette TT Speckle-Red
EX-93 DOM

5-08 3x 365D 18,600M

4.4%F 812F 3.5%CP 645P

THANK YOU to all who helped make it happen...

- Premier Breeder of the International Red & White Show, 14 times!
- 1st Place Senior Best 3 Females
- 2nd Place 125,000 Lb. Cow *Maternal sister to Pimm-Red*
- 1st Place Bred & Owned, 1st Place Genetic, 1st Place Production, 3rd Place 4-Year-Old Cow *Elm-Park Pimm-Red-ET*
- 1st Place Bred & Owned, 1st Place Production, 4th Place Aged Cow



Max Prange accepting the Premier Breeder Award for Elm Park Farms.

MARK THE DATE!

Elm Park Red Futures Sale March 29, 2008

2008
ELM PARK
RED
FUTURES
SALE



Product of the USA

1.800.525.2953
1.877.634.9556

www.twgltd.com
bullseye@twgltd.com

920.893.8844
Fax: 920.892.4282

N7124 Willow Road
Sheboygan Falls, WI 53085 USA